

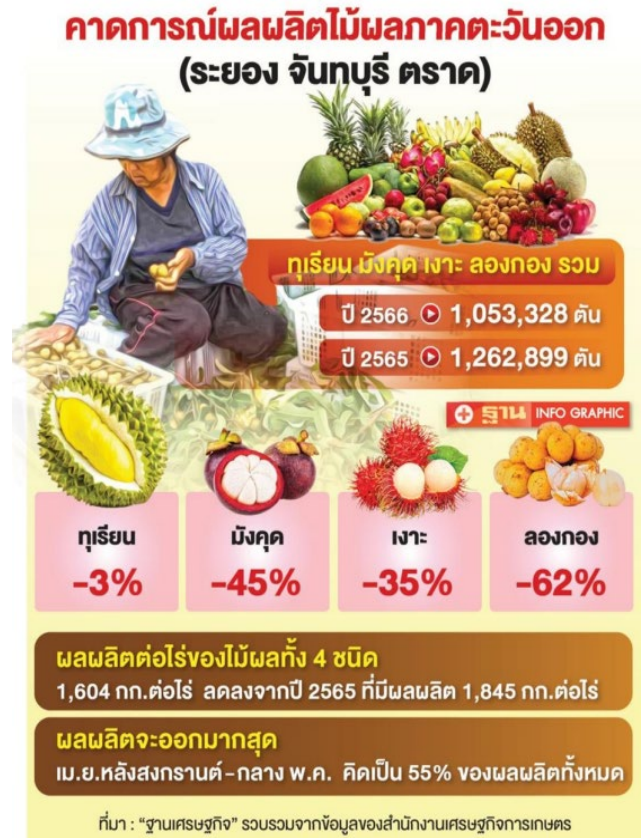


ฝ่ายเกษตร ประจำสถานกงสุลใหญ่ ณ นครลอสแอนเจลิส Thailand Office Of Agricultural Affairs, Los Angeles

www.thaiagrila.com OfficeofAgriculturalAffairsLA

Lower fruit harvest is expected in the eastern region of Thailand

The Office of Agricultural Economics (OAE), Ministry of Agriculture and Cooperatives, Thailand released a harvest forecast for four tropical fruit (durian, mangosteen, rambutan and longkong) in the eastern region of Thailand covering the province of Rayong, Chantaburi and Trad. In 2023, the total volume of fruit production is forecast at 1.05 million tons, down from 1.25 million tons in 2022. A drop of 2.09 hundred thousand tons, or 17%, came largely from longkong followed by mangosteen, rambutan and durian respectively. The yield decline is primarily attributed to a change in weather conditions characterized by heavy rainfall interspersed with cold weather from late 2022 to early 2023. Additionally, the windstorm from December 2022 to early April 2023 also were unfavorable for flowering and fruiting.



The produces, on the other hand, have been gradually released to the market from the beginning of February and will continue to be released through September 2023, with the biggest output in April-- from the Songkran Festival until mid-May-- accounted for 55 percent of total production. For the essential export fruit, all three provinces have adhered to mutual management rules. In the case of durian, measures had been put in place to control, prevent, and resolve the problem of inferior durian (immature durian) reaching the market by designating the harvest dates of four durian varieties: Kradoom, Puangmanee, Chanee, and Monthong. If farmers harvest their produce before the appointed time, durian samples must be taken to the Provincial Agricultural Office, District office, point of service, or designated institution for determination of the percentage of dry weight in durian pulp. In addition, random checks of the percentage of dried weight are conducted prior to closing the export container. There are also systems in place to monitor the percentage of dry weight at random before closing the export container. This must adhere to the TAS 3-2556 standard set up by the National Bureau of Agricultural Commodity and Food Standards,



ฝ่ายเกษตร ประจำสถานกงสุลใหญ่ ณ นครลอสแอนเจลิส Thailand Office Of Agricultural Affairs, Los Angeles

 www.thaiagrila.com  [OfficeofAgriculturalAffairsLA](https://www.facebook.com/OfficeofAgriculturalAffairsLA)

which states that the average percentage of dry weight of Kradoom variety must be no less than 27%, Chanee and Puangmanee must be no less than 30%, and Monthong must be no less than 32%.

Strict control measures preventing immature durian from being marketed in the country or exported are critical to maintaining Thai durian's quality standards and reputation and winning the hearts of consumers. In the midst of increased competition from durian and other fruits from Vietnam, Malaysia, Indonesia, and South American countries, quality and standards are the most essential aspects that must be preserved.

April 2023