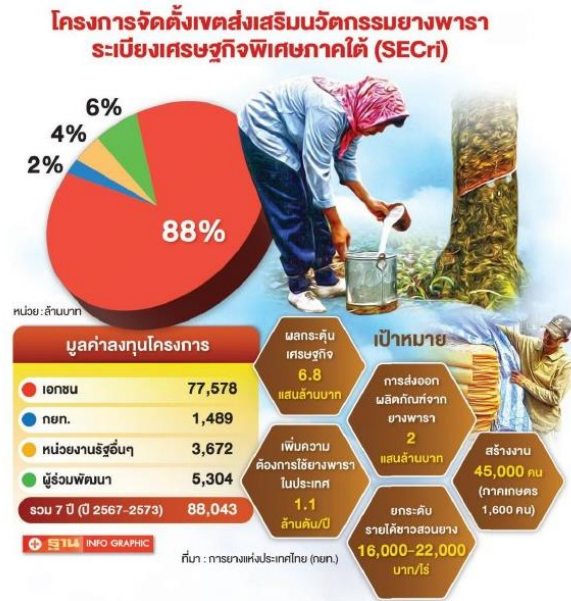




# ฝ่ายเกษตร ประจำสถานกงสุลใหญ่ ณ นครลอสแอนเจลิส Thailand Office Of Agricultural Affairs, Los Angeles

www.thaiagri.com OfficeofAgriculturalAffairsLA

## Southern Economic Corridor for Rubber Innovation



The Rubber valley initiative, presently known as SECRi, is continuously promoted and implemented by the government in order to achieve its long-term objective of drawing foreign investment to increase domestic rubber consumption. The SECRi area, which is overseen by the Rubber Authority of Thailand (RAOT), is comprised of 37,020 rai (approximately 14,636 acres) and is located in two districts of Nakhon Si Thammarat province. This site has the potential to support the growth of the rubber industry or serve as

a hub for rubber innovation, thereby contributing to the expansion of the business and the well-being of rubber farmers.

The value and percentage of investment value is shown below, broken down by investment source.

- \* Private sector: 77,578 mil. baht accounted for 88%
- \* Developers: 5,304 mil. baht accounted for 6%
- \* Other public: 3,672 mil. baht accounted for 4%
- \* RAOT: 1,489 mil. baht accounted for 2%